

# Mie & Ise-Shima

## Mie Prefecture



Mie Prefecture, where the Ise-Shima area is located, is positioned almost in the center of the Tokai region on the Japanese archipelago, facing the Pacific Ocean. Long and thin from north to south, the prefecture is about 80 km from east to west and 170 km from north to south.



## Ise-Shima

The Ise-Shima area is located in the southeastern part of Mie Prefecture. The area is dotted with numerous shrines and temples, including Ise Jingu, which is often called the “hometown of the hearts of the Japanese” and is a charming area steeped in history and tradition.

The rich, beautiful natural environment that is a part of Ise-Shima National Park has a delicate and graceful landscape, and the wealth of seafood nurtured on the jagged rias coastline has brought countless blessings to people since ancient times.

## Ise



Ise Grand Shrine



Meotoiwa Rocks



Oharaimachi



Okage Yokocho



Aka Fuku Mochi



Ise Udon

Ise's climate is relatively temperate. It is a city blessed with unique local assets. Ise has a wealth of historical and cultural sites and attractions.

In addition to being the gateway to Ise-Shima National Park, Ise has long thrived as a pilgrimage town, because it is home to Ise Jingu, popularly referred to as “Oise-san”, and considered by many as the spiritual home of the Japanese people.

## Toba



Toba Aquarium



Mikimoto Pearl Island



Ama Hut



Pearls



Toba oyster



Horned Turban

Toba is renowned for its temperate climate and the picturesque, island-studded Ise Bay. One of its islands, known today as Mikimoto Pearl Island, was where Kokichi Mikimoto succeeded in producing the world's first cultured pearl in 1893. Toba, home to pearls and Ama (female divers), is also well-known for its marine products such as Ise-Ebi (Japanese spiny lobster), Awabi (abalone), and farm-raised oysters, and boasts the largest number of Ama divers in Japan.

## Shima



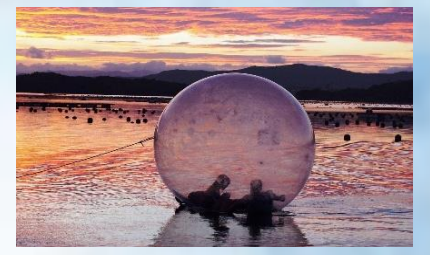
Yokoyama Observatory



Kashikojima Espana Cruise



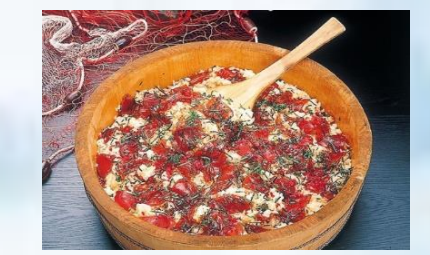
Ama Hut



Shima Nature School



Japanese Spiny Lobster



Tekone Sushi

The entire city area has been designated as part of the Ise-Shima National Park. Shima is well-known for its rich selection of seafood, superb views of the Pacific Ocean and its bays, vast green mountains, and mild climate throughout the year. Both bays are surrounded by a jagged, deeply indented coastline (or “rias coastline”). Matoya Bay is the site of a thriving oyster aquaculture industry and Ago Bay is the site of a strong cultured aquaculture industry pearl.



More information : Shima ALT & CIR  
Shima Municipal Government, the City of Shima, Mie



VisitShima  
(shimacityofficial)



Chill in Shima-Mie  
เที่ยวชิลล์ในชิมะ จ.มิเอะ